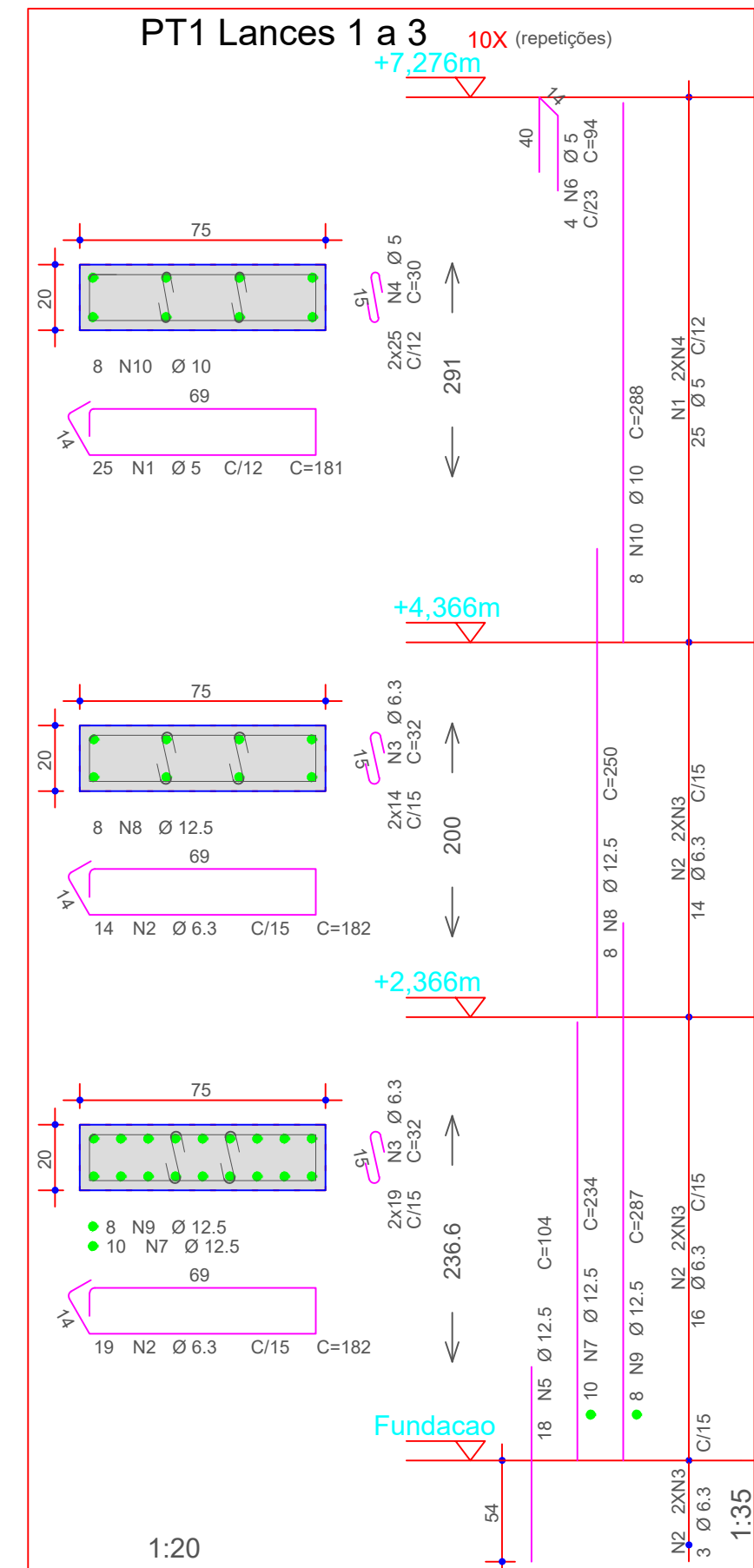
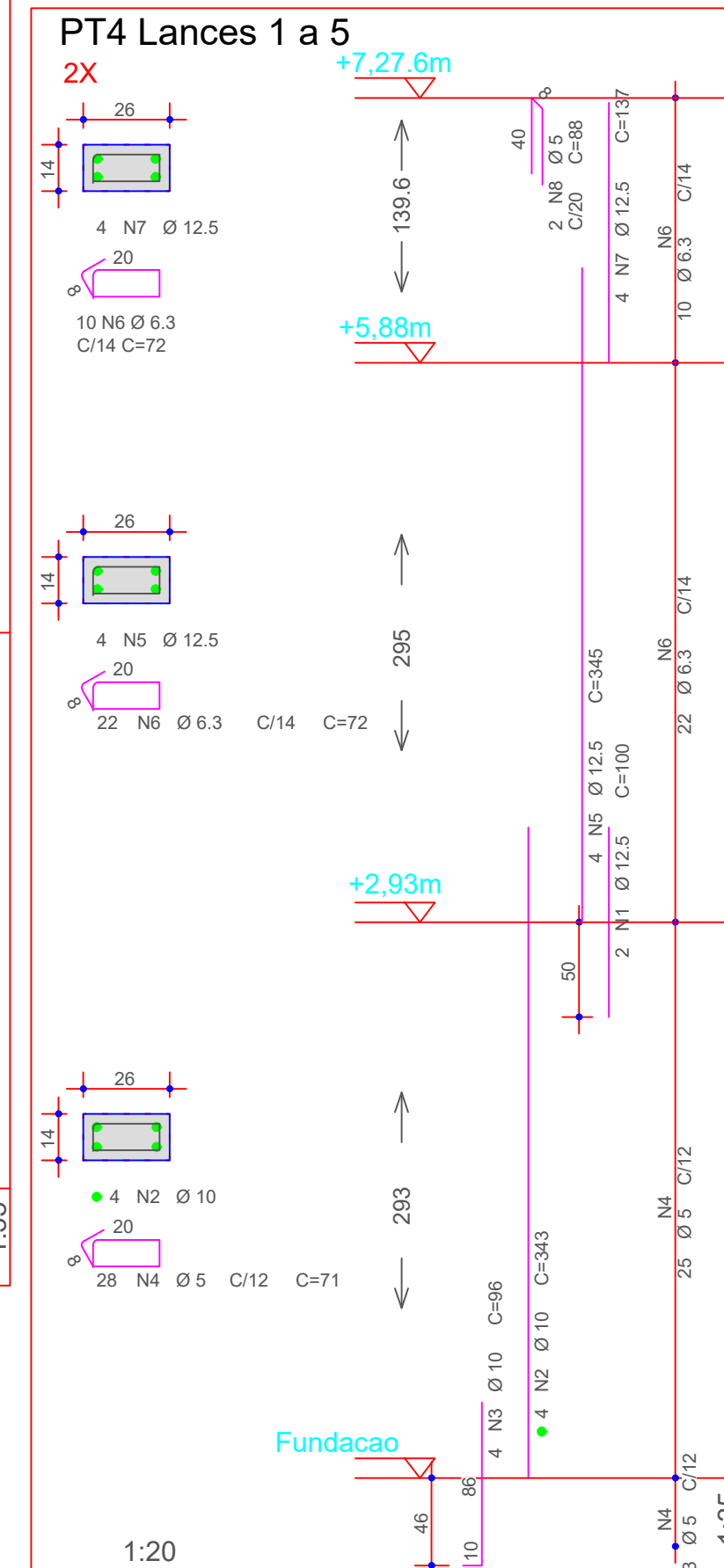
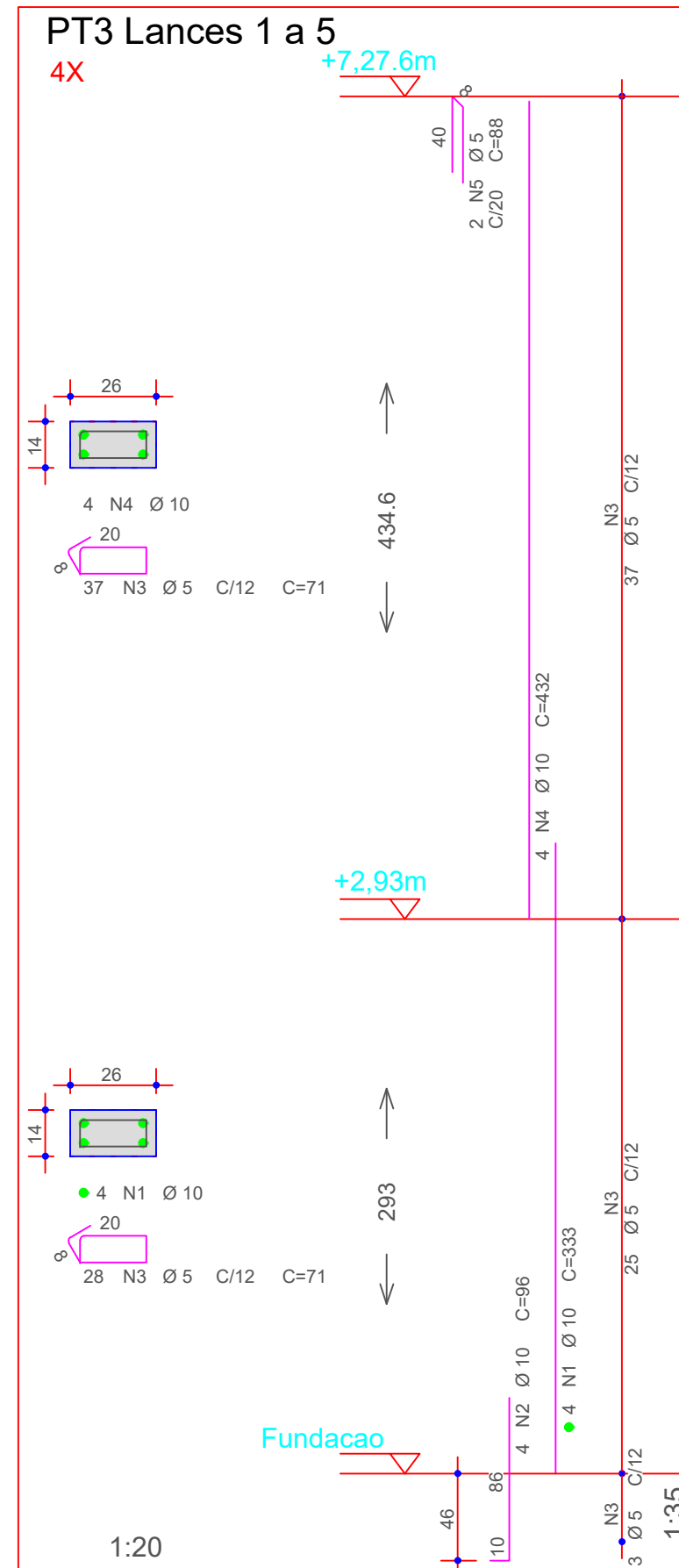


AÇO		POS	BIT (mm)	QUANT	COMPRIMENTO	
					UNIT (cm)	TOTAL (cm)
PT1 Lances 1 a 3 (X10)						
	60A	1	5	250	181	45250
	50A	2	6.3	330	182	60060
	50A	3	6.3	660	32	21120
	60A	4	5	500	30	15000
	50A	5	12.5	180	104	18720
	60A	6	5	40	94	3760
	50A	7	12.5	100	234	23400
	50A	8	12.5	80	250	20000
	50A	9	12.5	80	287	22960
	50A	10	10	80	288	23040
PILAR PT5 (X10)						
	60A	1	5	20	88	1760
	60A	2	5	650	71	46150
	50A	3	12.5	80	106	8480
	50A	4	12.5	80	250	20000
	50A	5	12.5	80	219	17520
	50A	6	10	40	355	14200
PT3 Lances 1 a 5 (X4)						
	50A	1	10	16	333	5328
	50A	2	10	16	96	1536
	60A	3	5	260	71	18460
	50A	4	10	16	432	6912
	60A	5	5	8	88	704

PT4 Lances 1 a 5 (X2)						
50A	1	12.5	4	100	400	
50A	2	10	8	343	2744	
50A	3	10	8	96	768	
60A	4	5	56	71	3976	
50A	5	12.5	8	345	2760	
50A	6	6.3	64	72	4608	
50A	7	12.5	8	137	1096	
60A	8	5	4	88	352	
PT2 Lances 1 a 2 (X4)						
50A	1	10	16	290	4640	
50A	2	10	16	104	1664	
60A	3	5	116	71	8236	
60A	4	5	8	88	704	



RESUMO AÇO CA 50-60			
AÇO	BIT (mm)	COMPR (m)	PESO (kg)
60A	5	1444	223
50A	6.3	858	210
50A	10	608	375
50A	12.5	1353	1304.64
Peso Total	60A =		223 kg
Peso Total	50A =		1619.64 kg

Volume de concreto (C-30) = 15,57 m<sup>3</sup>  
Área de forma = 240,56 m<sup>2</sup>

